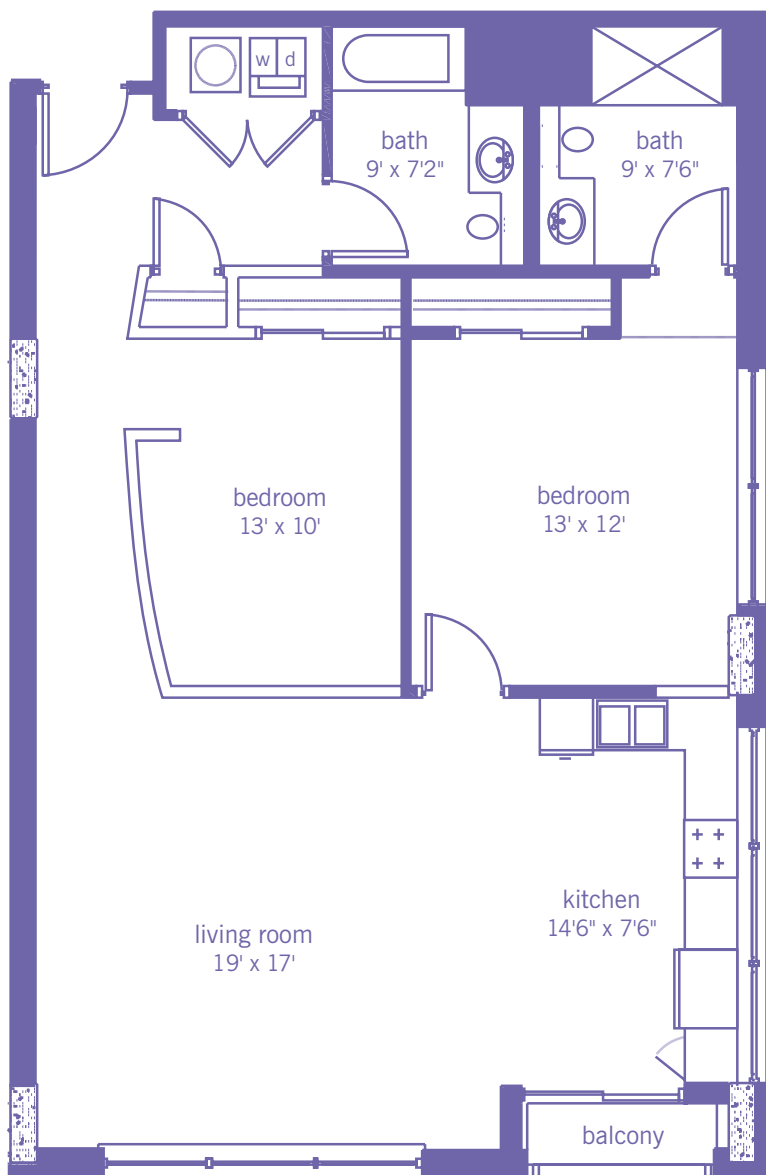


maryland

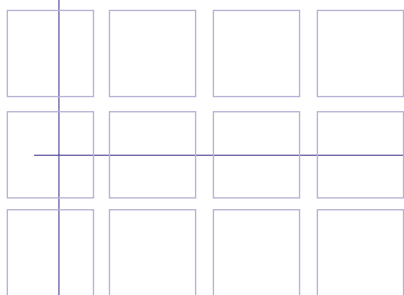
1,230 sF
[2 bedroom | 2 bath]

metrōlofts

URBAN LIVING IN THE WEST END



- full height walls
- partial height walls
- *patio per plan



4535 FOREST PARK AVENUE
ST LOUIS MISSOURI 63108
P 314.367.2400 F 314.367.2479
www.metrolofts-stl.com